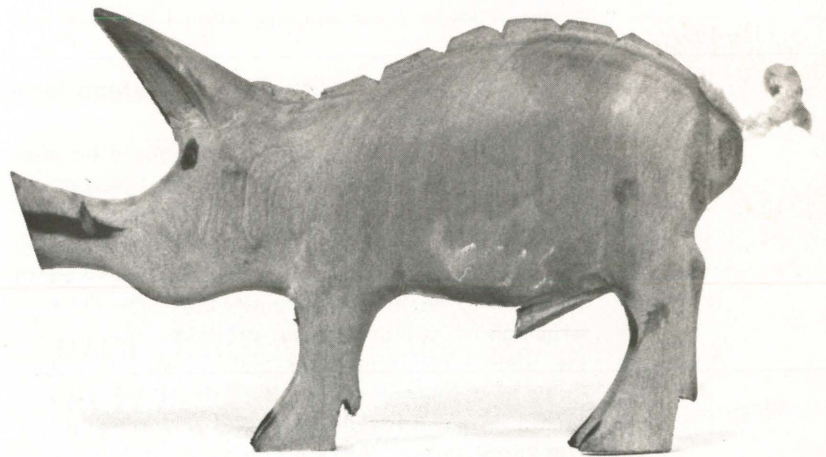


The Swiss and Italians who settled in Arkansas in the late nineteenth century with the black farmers of the delta and with the mountaineers, whose forebears hailed from Britain, are contributors to the patchwork of traditional cultures which characterize the State of Arkansas today. Each year the Festival focuses attention on a state to present an intensive picture of the stamina and variety of the area's folk cultural patterns.

Sponsorship for the Arkansas presentation has come from the Office of The Honorable, the Governor of Arkansas, Winthrop Rockefeller; from the State Parks, Recreation and Travel Commission and from a number of individuals and groups throughout the state.

A deeper insight into some of the participating craft workers and musicians as well as into the method of locating participants for the Festival can be found in the articles which follow: An Interview with Jimmy Driftwood, Ozark balladeer, founder of the Rackensack Folklore Society and Festival and creator of "The Battle of New Orleans", by James Morris, Director of the Smithsonian Institution, Division of Performing Arts; "Mister, Can You Tell Me Where This Road Goes?", by Mack McCormick, field researcher for the Festival.

Ralph Rinzler



Razor back hog, symbol of the state of Arkansas. Mother sow feeding her young. Wood carvings by northwestern Arkansas craftsman, Roy Harris.